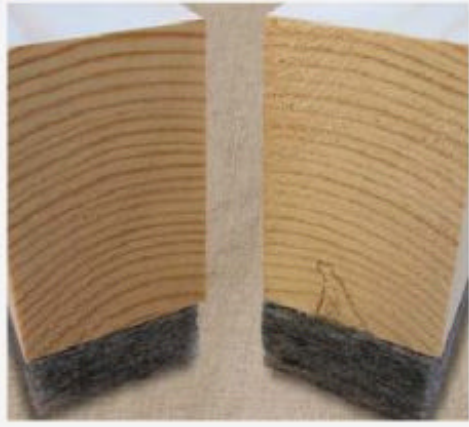


Shallow and Deep - Acoustic Resilient Composite Floor Battens



Isocheck **shallow** batten system is designed to reduce sound transmission through a concrete structural sub-floor and consists of a layer of 8mm Isopoli bonded to a softwood batten.

When installed as part of a complete party floor construction it enables a concrete floor to meet the sound transmission standards of ADE 2003 (amended 2004). Should the requirement be for a batten height other than that detailed on this page please contact us for further advice of suitability and availability.

Product Data

- ☞ Overall Batten Size: 1800mm x 45mm x 45mm*
- ☞ Resilient Layer Thickness: 8mm
- ☞ Resilient Layer: Isopoli cross-linked

* alternative batten depths are available to special order

Performance

Treated floor meets with the descriptive FFT3, typically within Robust Detail E-FC-2.

Using deeper battens (min. 70mm) would conform to FFT1 within E-FC-2 and E-FS-1.

- 18mm or 22mm chipboard deck
- Isocheck shallow battens @ 400mm max. centres
- min. 250mm in-situ concrete floor slab, 2400kg/m³ min density
- min 40mm, 80kg/m² screed applied directly to slab
- Suitable RD approved metal ceiling system
- Acoustic flanking band reduces the impact vibration leaking via structural walls and assists in reducing airborne and impact sound paths.

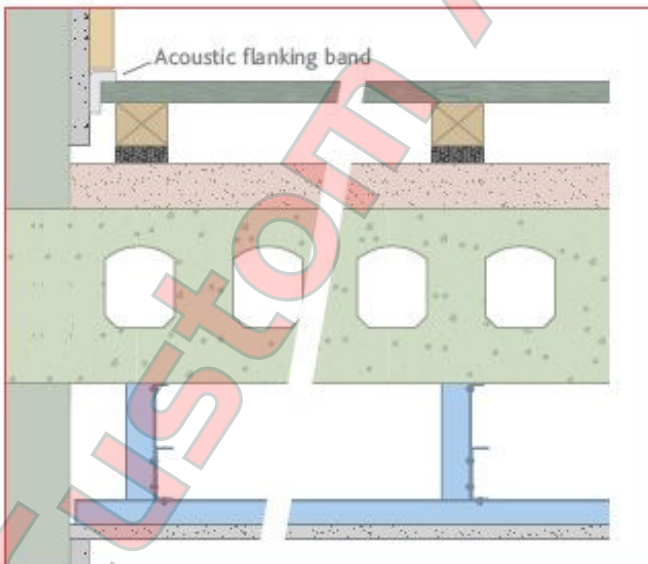
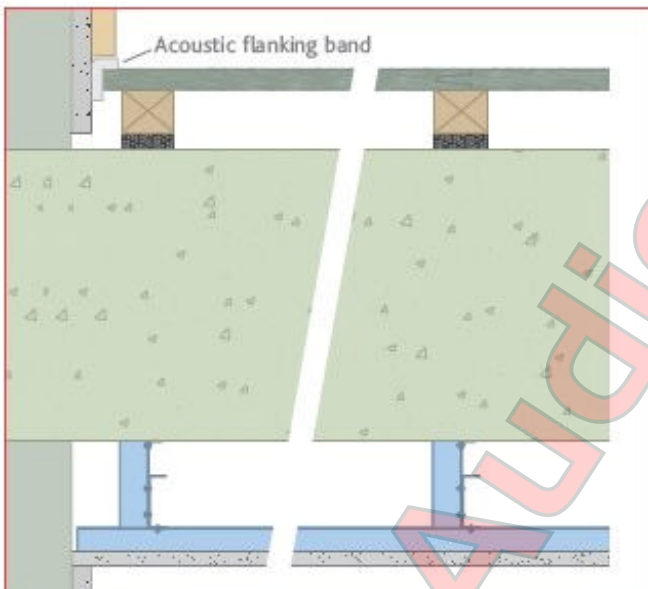
Performance

Treated floor meets with the descriptive FFT3, typically within Robust Detail E-FC-1.

Using deeper battens (mi. 70mm) would conform to FFT1 within E-FC-1.

- 18mm or 22mm chipboard deck
- Isocheck shallow battens @ 400mm max. centres
- min. 40mm, ≥80kg/m² bonded screed
- min. 150mm hollow core concrete plank (300kg/m²)
- Suitable RD approved metal or timber ceiling system
- Acoustic flanking band reduces the impact vibration leaking via structural walls and assists in reducing airborne and impact sound paths.

SPECIFICATION: The acoustic floor shall be:
Isocheck Shallow Batten, by Custom Audio Designs Ltd, Unit 2, Amey Industrial Estate, Petersfield, Hampshire, GU32 3AN and installed in accordance with manufacturer's instructions / recommendations.



IsoCheck **Deep** Batten system is designed to reduce sound transmission through timber floors within a timber frame structure.

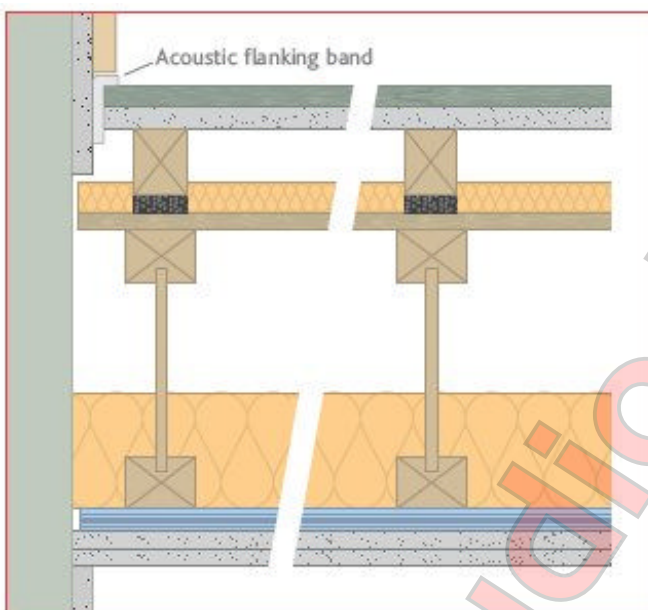
IsoCheck Deep Batten consists of a batten bonded to 18mm IsoFiba. When installed as part of a complete party floor construction it enables a timber floor to meet the sound transmission standards of ADE 2003 (amended 2004).

Should the requirement be for a batten height higher than that detailed here please contact us for further technical advice and suitability.

Product Data

- Overall Batten Size: 1800mm x 45mm x 78mm O/A
- Resilient Layer Thickness: Down to approx. 14mm under a normal domestic load.
- Resilient Layer: 18mm IsoFiba

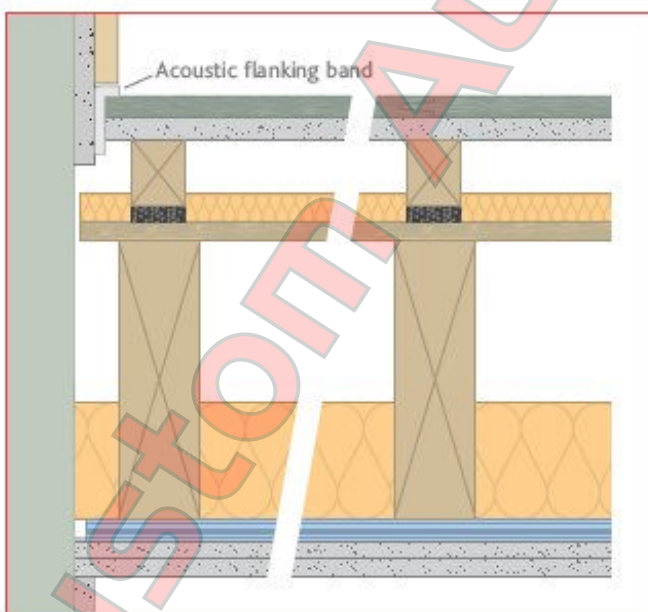
When heavy loads are expected for instance kitchens etc. the 74mm HL (high load) version should be used alongside the 78mm standard version so under loads the level will be maintained. Please contact us for specific requirements and heavy load applications.



Performance

Treated floor meets with the descriptive FFT1, typically within Robust Detail E-FT-1.

- 18mm chipboard and 19mm plasterboard plank
- Isocheck deep battens @ 400mm max. centres perpendicular to the joists
- min. 60mm, 45kg/m³ mineral wool between battens
- min. 15mm thick floor decking
- min. 240mm timber I-joists at max. 400mm centres.
- min. 100mm thick, 45kg/m³ mineral wool between joists
- min. 24kg/m² double boarded ceiling on resilient bars perpendicular to joists
- Acoustic flanking band reduces the impact vibration leaking via structural walls and assists in reducing airborne and impact sound paths.



Performance

Treated floor meets with the descriptive FFT1, typically within Robust Detail E-FT-2.

- 18mm chipboard and 19mm plasterboard plank
- Isocheck deep battens @ 400mm max. centres perpendicular to the joists
- min. 60mm, 45kg/m³ mineral wool between battens
- min. 11mm thick OSB floor decking
- min. 220mm solid timber joists
- min. 100mm thick, 45kg/m³ mineral wool between joists
- min. 24kg/m² double boarded ceiling on resilient bars perpendicular to joists
- Acoustic flanking band reduces the impact vibration leaking via structural walls and assists in reducing airborne and impact sound paths.

SPECIFICATION: The acoustic floor shall be:

Isocheck Deep Batten, by Custom Audio Designs Ltd, Unit 2, Amey Industrial Estate, Petersfield, Hampshire, GU32 3AN and installed in accordance with manufacturer's instructions / recommendations.

GENERAL DATA			
Part No.	Height	Width	Length
AFB30	30mm	45mm	1800mm
AFB45	45mm	45mm	1800mm
AFB50	50mm	45mm	1800mm
AFB60	60mm	45mm	1800mm
AFB70	70mm	45mm	1800mm
AFB78	78mm	45mm	1800mm
AFB74HL	74mm	45mm	1800mm

Every effort has been taken in the preparation of this sheet to ensure the accuracy of representations contained herein. Recommendations as to the use of materials, construction details and methods of installation are given in good faith and relate to typical situations. However, every site has different characteristics and reliance should not be placed upon the foregoing recommendations. Advice can be given as to specific applications.

All information contained in these details is given in good faith but without warranty.
Custom Audio Designs reserves the right to alter the specifications of any product without notice.